



Roteq

turbomachinery
services

Field Services
Workshop Services
Controls
Diagnostics



Capability Statement

Enhancing turbomachinery
performance through expert
solutions



WELCOME TO ROTEQ

Roteq is dedicated to delivering independent, responsive, and flexible turbomachinery services tailored to your needs. As your comprehensive, single-source provider, we offer expert solutions for all your turbomachinery requirements, ensuring reliability and excellence at every stage.

TURBOMACHINERY SPECIALISTS

Our interdisciplinary teams are specialists in their respective fields of turbomachinery, bringing extensive international experience. Many have developed their expertise firsthand through roles with original equipment manufacturers

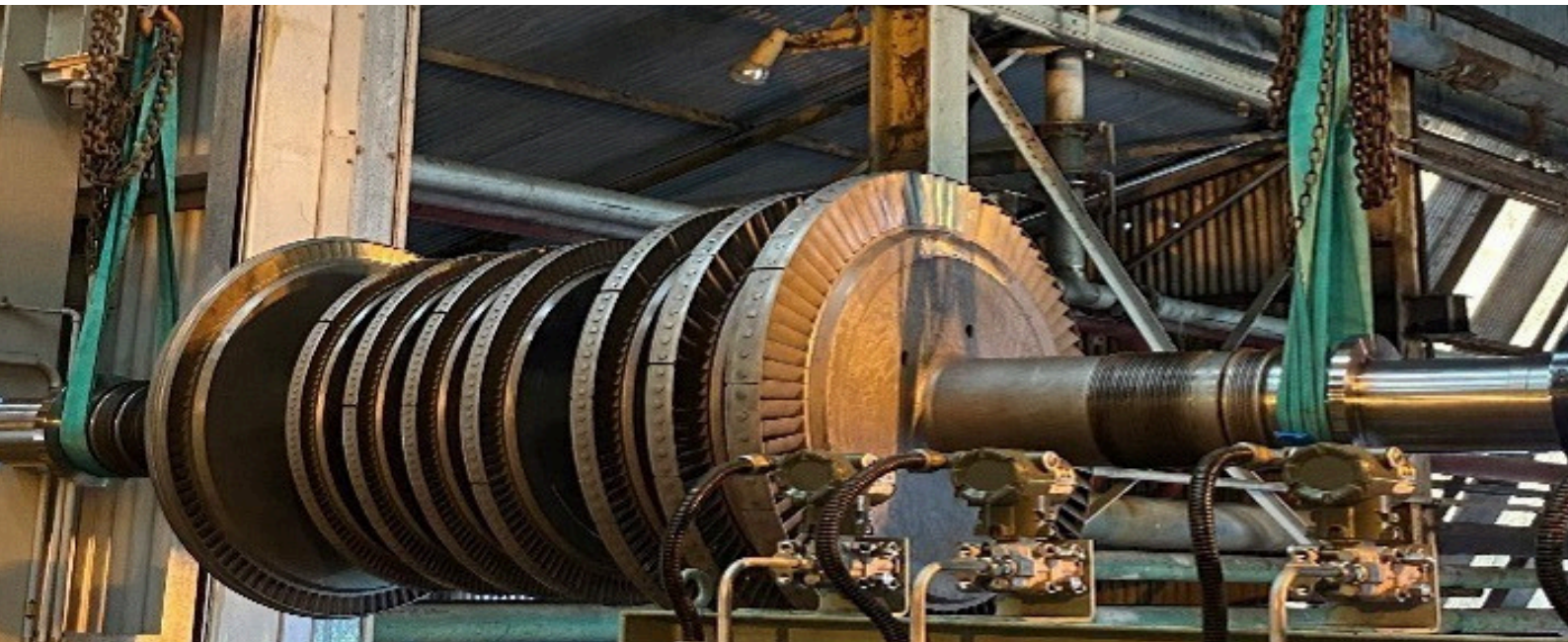
INTEGRATEDMANAGEMENTSYSTEM

Roteq maintains zero workplace injuries while delivering quality workmanship within project timelines. Environmental protection and conservation measures are integrated into all operational procedures across the organization.

We are a people business, where everyone goes the extra mile. **When a job needs doing, we're there.**



Andre Bossert
Director CEO



Field SERVICES

No matter the complexity of your project, Roteq specialists work closely with your team to exceed expectations and ensure timely delivery. We offer fully collaborative field services across a wide range of equipment, including steam and gas turbines, turbo compressors, pumps, motors, generators, gearboxes, lube oil systems, gas seals, cooling systems, and associated controls.

PLANNED OVERHAULS

Roteq delivers complete shutdown services, including detailed reporting and repair recommendations. We also manage long-term service agreements, ensuring ongoing reliability and performance of your critical assets.

NEW INSTALLATIONS

Roteq provides comprehensive services for critical rotating equipment, covering every stage from planning and execution through to commissioning and handover.

PRE-SHUT DOWN PLANNING

Roteq develops comprehensive scopes and work packs, meticulously pre-planning overhauls by scheduling resources and inspecting spare parts to ensure efficient and effective execution.

EMERGENCY RESPONSE

Roteq responds promptly to unexpected maintenance needs, providing support whenever and wherever it's required

LUBE OIL FLUSHING

Roteq utilizes purpose-built mobile centrifuge filtration systems to achieve optimal oil cleanliness and effective de-watering. Oil sampling and reporting follow ISO standards to ensure quality and reliability.

ON SITE AND OFFSITE TRAINING

Roteq provides fully customized training programs for your staff, covering all aspects of turbomachinery operation and maintenance.



WORKSHOP SERVICES

Roteq integrates in-house expertise with specialised subcontractor partners to provide comprehensive turbomachinery inspection, repair, and re-engineering services, ensuring timely, safe, and cost-efficient solutions tailored to your needs.

EQUIPMENT OVERHAUL

Roteq specializes in overhauling both rotating and stationary components of compressors, turbines, pumps, and their sub-assemblies. Our detailed technical “as left” reports are promptly made available online for your convenience.

RE-ENGINEERING

Roteq upgrades components of compressors, turbines, pumps, and control systems to comply with the latest industry standards, ensuring optimal performance and reliability.



WORKSHOP DYNAMIC BALANCING

Roteq balancing machines operate to the highest standards, complemented by the delivery of comprehensive quality reports.

ROTOR STORAGE

Roteq maintains your rotor in optimal condition by storing critical parts in custom-designed, nitrogen-buffered storage boxes within a climate-controlled environment. We guarantee same-day shipping to ensure rapid turnaround.

SPARE PARTS

At Roteq we understand the critical importance of spare parts for your business- essential rotating equipment. Our goal is to significantly reduce delivery lead times and minimise costs by efficiently sourcing and supplying all rotating equipment-related spare parts.



CONTROLS

Roteq delivers a single-source solution for controls, condition monitoring, system integration, and upgrades across Asia Pacific industries. We understand the strengths and limits of OEM control systems for rotating equipment. Our expertise ensures controls operate at peak performance. This reduces downtime, boosts reliability, and cuts costs.

MACHINERY PROTECTION SYSTEM

Roteq utilises the latest technology in machinery protection systems to deliver optimal solutions for both upgrades and new installations. Fully compliant with API 670 and universally compatible, our systems provide enhanced safety and significantly reduced costs compared to outdated technologies.

MACHINERY PERFORMANCE & ANTI SURGE PROTECTION

Roteq expert in rotating equipment, optimises machinery performance and reduces operating costs through advanced algorithms and data-driven solutions.

INSTRUMENTATION

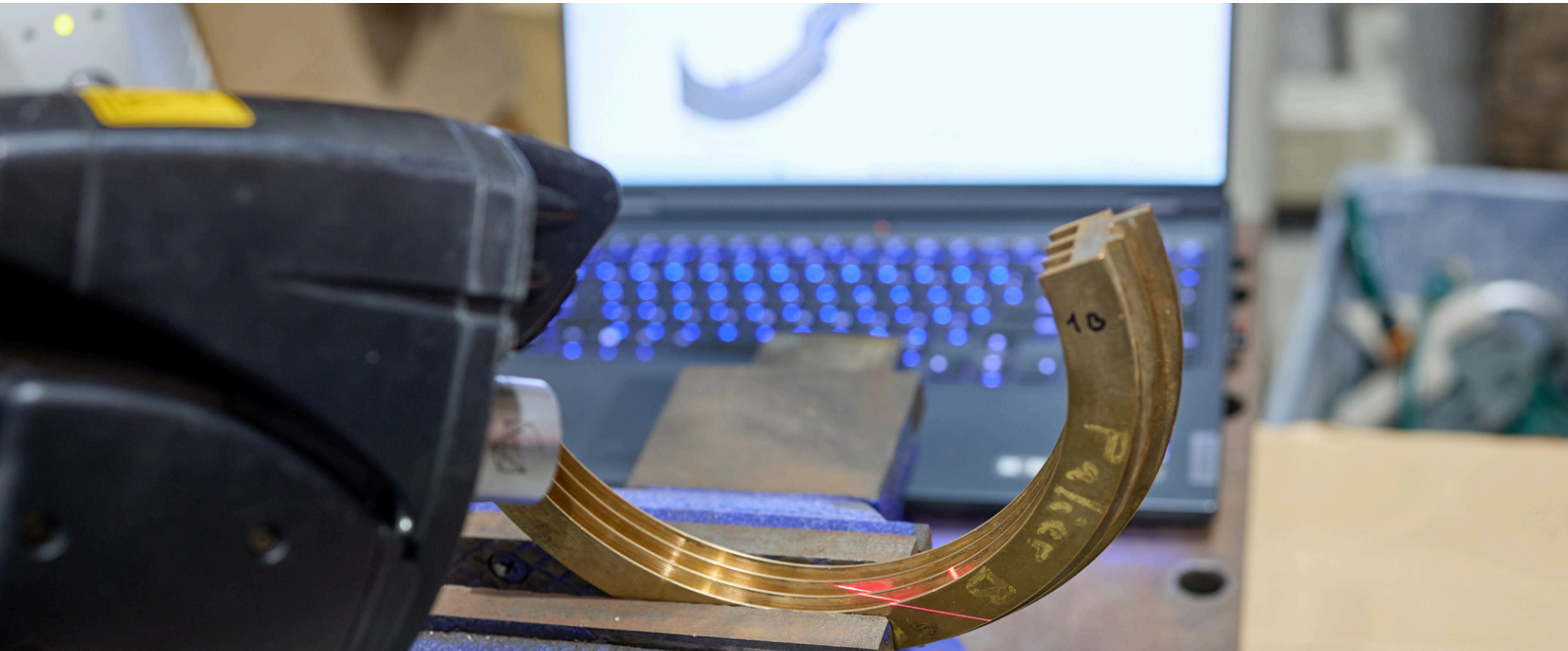
Roteq verifies all instruments during service, ensuring precise calibration and correct installation to maximise performance and reliability.

CONSULTANCY & UPGRADES

Roteq consults daily on effective strategies to resolve engineering challenges. From the initial site visit, our engineers work closely with you, sharing their expertise to deliver practical and long-lasting upgrade solutions.

TRAINING

Roteq offers customised on-site and off-site training in alignment, vibration analysis, controls, and diagnostics, tailored to your specific operational needs.



DIAGNOSTICS

Roteq experienced technicians not only diagnose equipment performance against defined limits but also identify root causes and deliver practical solutions. We analyse dynamic behaviour, including process variables, vibration, temperature, imbalance, and shaft alignment.

VIBRATION ANALYSIS

Roteq uses a range of state-of-the-art technologies to accurately measure and assess vibration dynamics for optimal machinery performance.

LASER ALIGNMENT

Machine misalignment is a primary cause of equipment failure and downtime. To prevent this, Roteq combines expert knowledge and advanced technology to deliver precise machine alignment to the highest standards.

ON SITE DYNAMIC BALANCING

Roteq on-site dynamic balancing employs the latest technology to balance all rotating equipment at full operational speed. Our field services cover both single-plane and multi-plane balancing.

REMOTE DIAGNOSTIC CENTRE

Roteq Remote Diagnostic Centre continuously and cost-effectively analyses the condition of your machinery. Our diagnostic interval reports provide up-to-date data on the precise health of your equipment.



COMPRESSOR DIVISION

Roteq delivers end-to-end compressor solutions, from supplying new compressors to providing expert service, overhaul, and maintenance. With advanced workshop facilities, skilled technicians, and responsive field teams, we specialise in centrifugal and reciprocating compressors for a wide range of industries.

CENTRIFUGAL COMPRESSOR SERVICES

Roteq specialises in complete maintenance and overhaul services for all types of compressors. We deliver expert solutions tailored to your equipment's performance needs, ensuring minimal downtime and extended operating life.

EMERGENCY RESPONSE & FIELD SERVICES

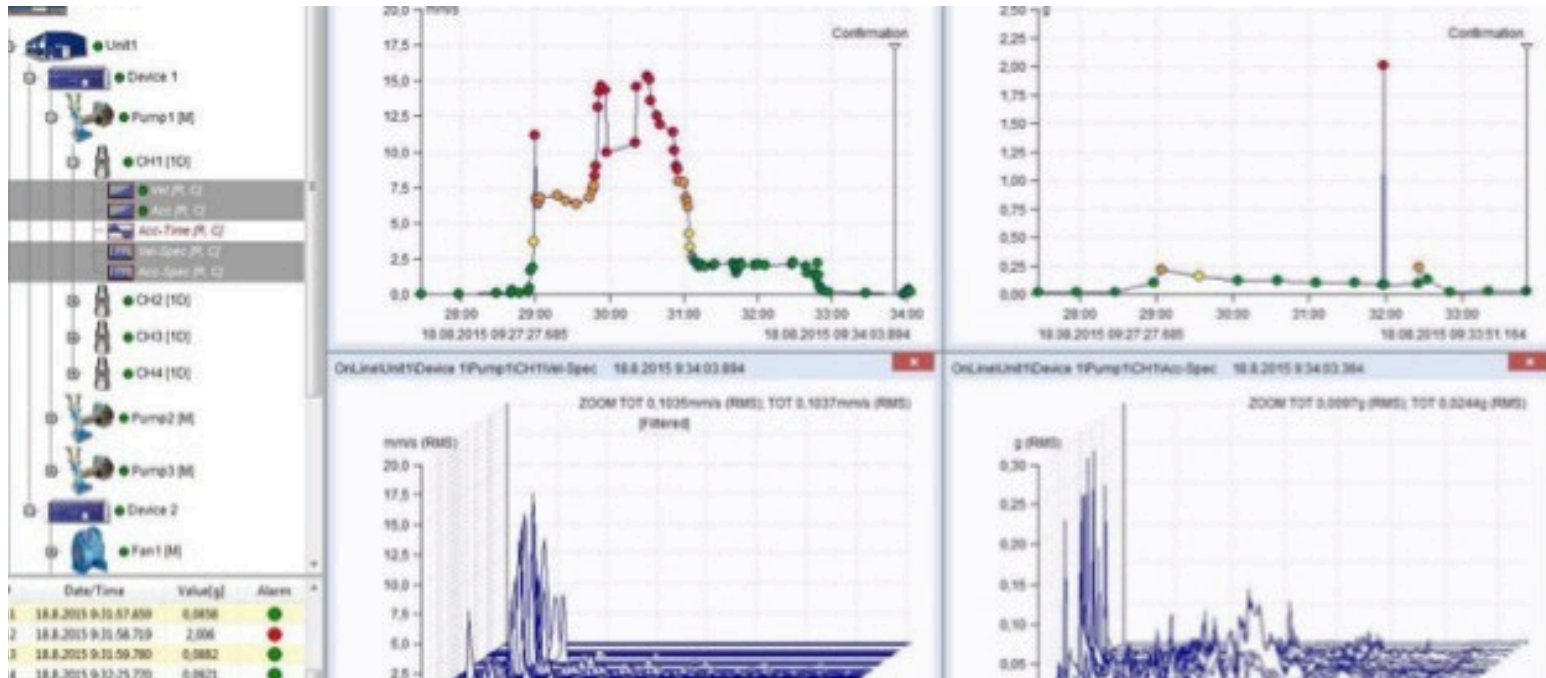
Roteq offers 24/7 emergency call out service for critical compressor failures across all compressor types. Our rapid response teams provide immediate on-site troubleshooting, root cause analysis, and temporary repair solutions. We also deliver planned maintenance, vibration analysis, laser alignment, and full commissioning services to maximise uptime and ensure optimal system performance.

RECIPROCATING COMPRESSOR MAINTENANCE

Roteq provides expert maintenance for reciprocating compressors, including single-stage, multi-stage, diaphragm, and oil-free systems. Services include valve reconditioning, cylinder rebuilds, piston replacements, and performance testing. We support natural gas, hydrogen, and industrial gas applications, offering rotor balancing, impeller repairs, and anti-surge upgrades to maximise reliability and efficiency.

WORKSHOP OVERHAUL & TRAINING

Complete workshop overhaul services with advanced balancing capabilities and detailed "as left" reporting. Roteq provides rotor storage in climate-controlled environments, spare parts supply and fast turnaround times. We offer customised training programmes covering compressor operation, maintenance techniques, troubleshooting and predictive maintenance for optimal equipment reliability.



Technology & Equipment

Condition Monitoring Solutions

SETPOINT® Machinery Protection System (MPS) - API 670 compliant, compact ultra-reliable design with integral touchscreen, open data access, up to 56 channels in 19" rack space

SETPOINT® Condition Monitoring Software (CMS) - PI® powered system connecting directly to MPS for real-time monitoring and advanced diagnostics

ADASH VA5 Vibration Analyzer - State-of-the-art 4-channel high-speed analyzer for periodic data collection and fault detection

SHINKAWA Systems - Trusted worldwide for online condition monitoring of large rotating machinery





At Roteq, our continued growth is driven by strong collaboration with our customers, partners, and dedicated team working together to deliver the smartest solutions. Through our partnerships, you gain access to a wide range of innovative products and technologies.

Representations



CUSTOMERS





Offices & Workshops

Sydney Head Office & Workshop
Unit 17, 176 South Creek Road
Cromer, NSW 2099

Melbourne Office & Workshop
Unit 21, 71 Frankston Gardens
Drive Carrum Downs VIC 3201

Brisbane Office & Workshop
Unit 108.2, 2-6 Leonardo Drive
Brisbane Airport, QLD

Perth Office & Workshop
Address: Unit 6/30 Sustainable
Ave, Bibra Lake, WA, 6163,
Australia

Contact Us

+61 (0)2 9984 0700
contactus@roteq.com.au
www.roteq.com.au

